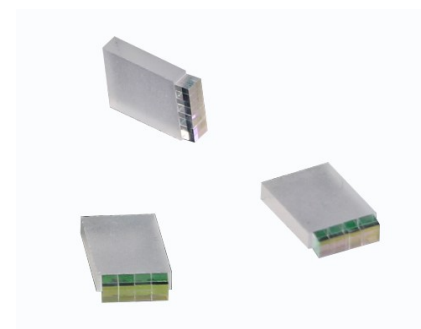


## 400G nWDM Filter Block

Auxora's Narrow-band WDM Filter Block (nWDM Filter Block) is a broad portfolio of vertically-integrated products using precision optical thin film filters and micro-optic structure. It is designed and manufactured in house with our proprietary processes including optical thin film coating, precision dicing and polishing, micro-optic assembly, and high-volume automatic assembly manufacturing. This nWDM can be used as Mux/Demux two/four optical nWDM channels/wavelengths into a single-mode fiber, with channel spacing of 400GHz, each transmitting at 100Gb/s, 200Gb/s or higher speed signals.

The nWDM Filter Block is Telcordia-1221/1209-CORE compliant and are commercially available in various sub-assembly



### FEATURES

- Compact Size
- Low Insertion Loss & Low PDL
- Excellent Channel Uniformity
- Wide pass band & High channel isolation
- Exceptional reliability and stability
- Telcordia GR-1221/1209-CORE Compliant

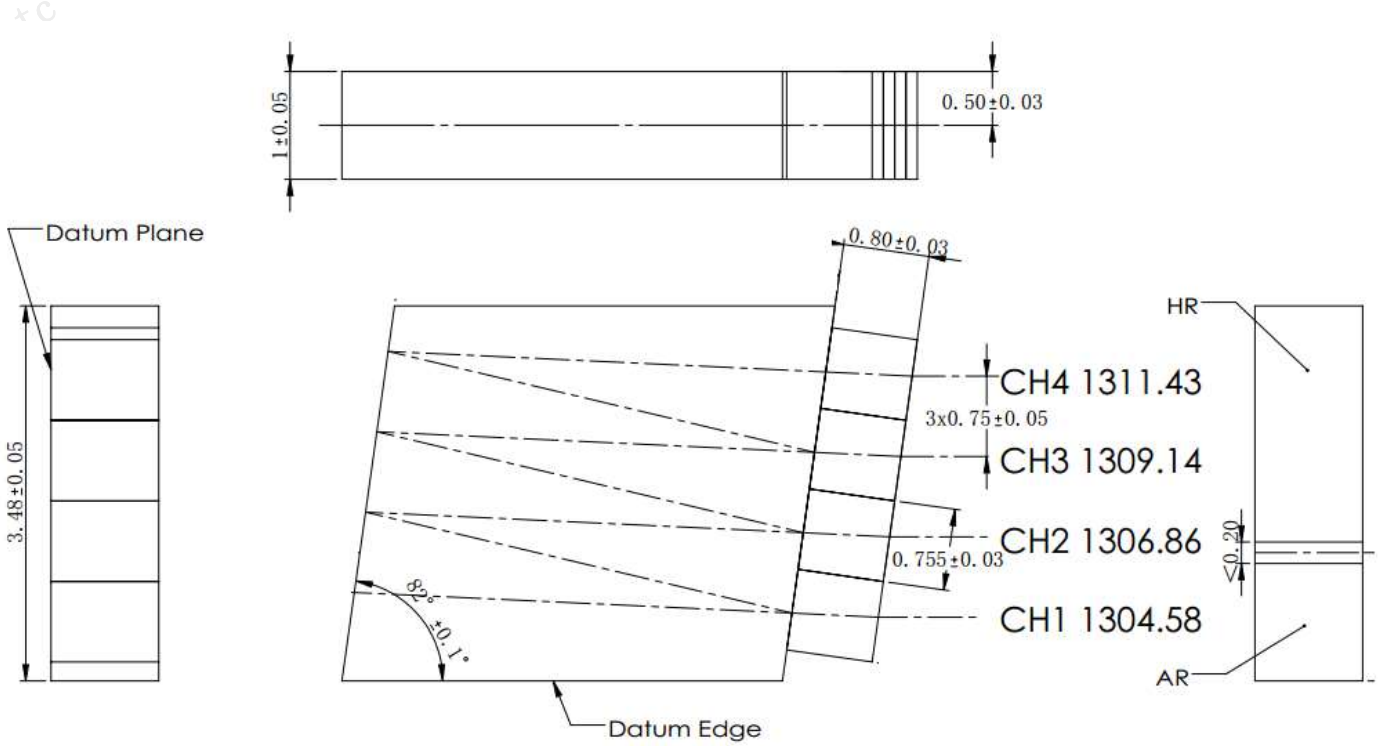
### APPLICATIONS

- ER4 nWDM optical transceivers
- Other Ultra High Speed Transceivers

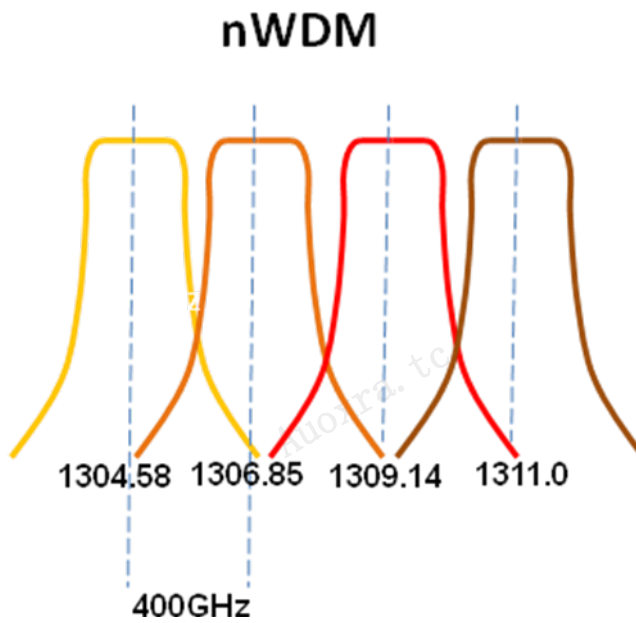
### SPECIFICATIONS

Parameters	Unit	Specifications
Operating Wavelength Range	nm	1260~1360
Angle of Incidence	Deg	8
Channels	-	4CH
Channel Spacing	-	400 GHz
Central Wavelength	nm	1304.58/1306.86/1309.14/1311.43 or 1295.56/1297.80/1300.05/1302.31
Passband	nm	$\geq CW \pm 0.5$
Insertion Loss @ passband	dB	$\leq 1.0$ (4CH)
IL Uniformity	dB	$\leq 0.5$
Ripple @ passband	dB	$\leq 0.4$
Polarization Dependent Loss@ passband	dB	$\leq 0.25$
Adjacent channel isolation	dB	25
Non-adjacent channel isolation	dB	30
Light Spot Pitch	um	750+/-50 or customized
Parallelism for all of 4CHs	Deg	$\pm 0.10$
Operating Temperature	°C	-5~75
Storage Temperature	°C	-40 ~ +85

**Package Dimensions (mm):**



**Spectrum:**



**Ordering Information:**

- If you have any requirements for this product, please contact us.  
[sales@auxora.com](mailto:sales@auxora.com) or [saleschina@auxora.cn](mailto:saleschina@auxora.cn)